

**- TREE FOR BENCH -**  
**CREATING A 4,5 HA NEW FOREST IN**  
**THE REGUA RESERVE, BRAZIL**



## INTRODUCTION

Since 2001 IUCN NL has, through its Land Acquisition Fund, been supporting local NGOs to purchase or lease essential nature areas as a strategy to protect, connect and restore habitat for endangered species of flora and fauna. Over the last 20 years, the Land Acquisition Fund has worked with over 100 NGOs in 36 countries to protect nearly 42.000 hectares of critical habitat. This year we are celebrating the 20<sup>th</sup> anniversary of our program and we are immensely proud of all the partners we have supported over the years, from Nicaragua to Iraq, from Armenia to Indonesia.

Sir David Attenborough once said: *"You can form all the committees, all the societies, all the working groups, all the charities you like but you know that in the end, it is that one individual, that one individual that has passion, that one individual that has fire in the belly, that one individual that is determined that something should be done."*



Finding the people with this 'fire in the belly' is key in our line of work and over the years we have managed to find out where they are. This makes us a perfect partner for private - and corporate donors that are looking for ways to really make an impact for nature, in locations where it really matters. Our anniversary video gives a good overview of the work of our partners and what we have achieved in 20 years: [https://youtu.be/QD4VLDsd\\_JU](https://youtu.be/QD4VLDsd_JU)

## CONTEXT

Project Outdoor Creation (POC) is a highly efficient organized company that designs progressive new innovative concepts. Their products are made out of high quality materials, including tropical hardwood and are all hand made by highly experienced employees. In January POC approached IUCN NL with an idea to plant a tree for every product they sell, the 'Tree for Bench' program. After a few meetings we decided that POC will donate to IUCN NL's Land Acquisition Fund, and that the donation will be spent (100%) on a project of one of the Fund's beneficiaries - REGUA in Brazil - notably for the reforestation of 4,5 ha plot on the 112 ha Santa Marta property.

## INTRODUCING REGUA



The Atlantic Rainforest is a habitat under severe threat, with less than 7% of its original 330 million hectares of forest remaining, and only an estimated 2% still in its virgin state. With estimates of up to 8,000 endemic plant species and 600 endemic species of terrestrial vertebrates, the Atlantic Forest is considered to be one of the most biodiverse ecoregions in the world. Figures published in 2003 show that 38 of the 69 severely endangered mammal species in Brazil are found in the Atlantic Rainforest, 118 of the 160 endangered bird species, 13 of the 20 endangered reptile species and all of the 16 endangered amphibian species.



The REGUA project has developed significantly since its creation in 2001 acquiring land to almost 7,549 ha, and manages a further 3,781 ha with likeminded owners.

REGUA's reserve is a true haven for biodiversity of all shape and form: 73 species of amphibians, 37 species of reptiles, 480 bird species (of which 120 can only be found in the Atlantic Rainforest), 73 species of mammals and 204 species of dragonflies. In addition REGUA's reserve supports a growing population of the Critically Endangered Southern Woolley Spider Monkey (Muriqui) which has total global population of less than 1500 individuals.

## WHY REGUA

We think REGUA would be the perfect partner for POC for a couple of reasons:

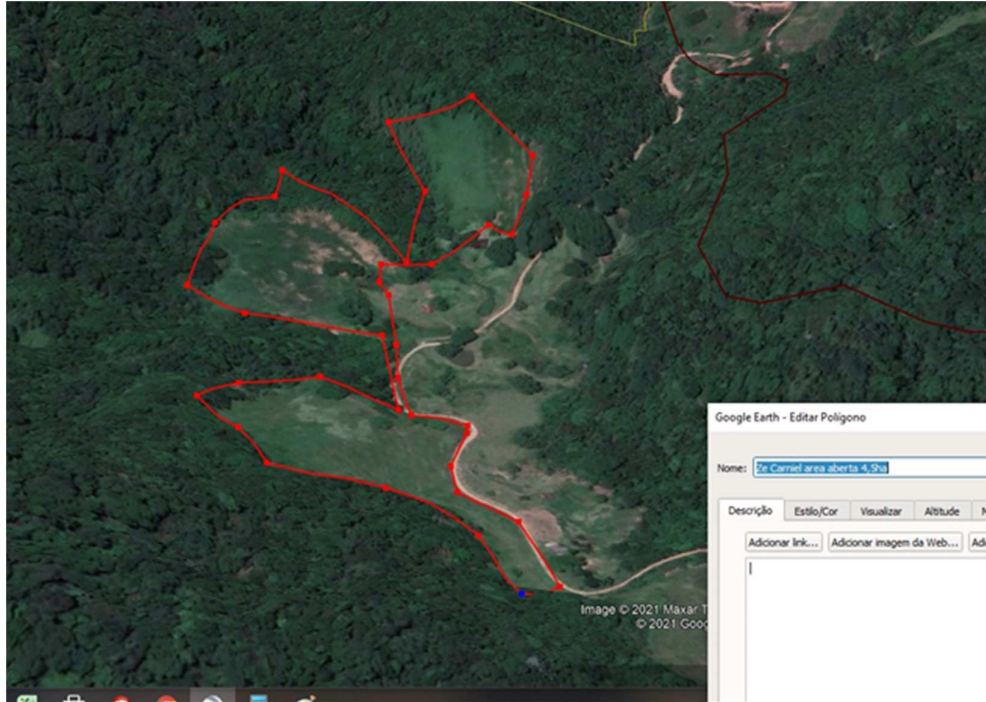
- They are true reforestation experts with 600.000 trees planted since 2001
- They are easy to visit, located just outside Rio de Janeiro
- They are very good communicators, providing us with very good visual material.



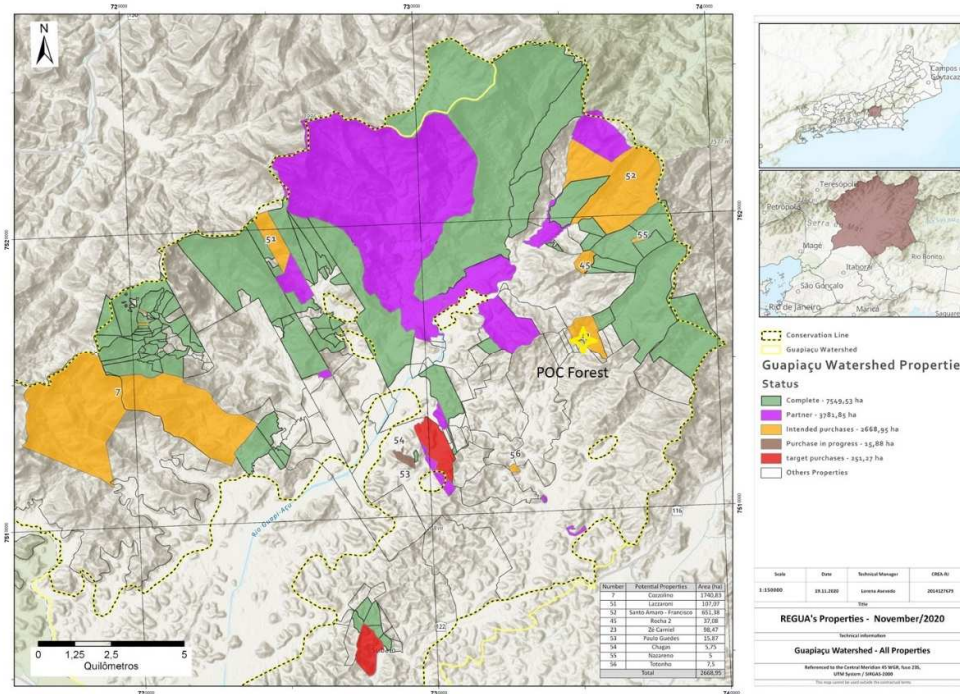
Example of reforestation success on land acquired with IUCN NL funding: 2009 vs 2020

## PROJECT TO BE FUNDED BY POC

The 112 ha Santa Maria farm has an area to be forested that measures 4,5ha. The property is currently being acquired by REGUA, and the intention is to increase overall protection of the biodiversity found within this property through restoration and generating employment and guaranteeing a biological corridor between both sides of the Santa Maria River. The area of 4,5ha is currently covered in exotic grass (*Brachiaria decumbens*) and is in stark contrast to the forests on either side. The planting is to occur in late 2021 before the rainy period. Seeds are sourced from local genetic material and the 140 tree species that will be planted are a mix of 60% pioneer species intermixed with 40% climax tree species



The 4,5 ha that will be reforested under the Tree for Bench project.



Yellow star showing location of the Sta Marta property

## **COSTS**

On the selected plot REGUA will start planting native trees. REGUA uses a proven successful method where they plant 1667 trees per hectare. The costs per tree to bring it to a size where it doesn't need maintenance anymore is **USD 4**. This amount includes the cost of collecting seeds in the forest, raising seedlings in the nursery, planting and maintenance (labor) for about three years. For every euro 1000, REGUA can plant about 300 trees.

At the start of the project, REGUA will take pictures of the plot at fixed points which shall be repeated at regular intervals throughout the years to show progress. When the forest takes shape we can put trap cameras or even acoustic devices up to record what is happening in the forest POC helped to create.

## **AGREEMENT**

POC will start with a euro 1000 donation to enable REGUA to initiate treeplanting at the start of the season in 2021. The long term objective of POC is to support the reforestation of the whole 4,5 ha plot.

A separate agreement will be made to define long term plans of POC as well as the obligations of all parties and ways to communicate about the project.